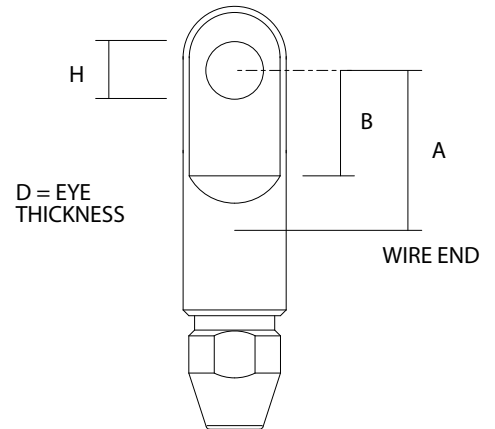


Sta-Lok Eye



- ▶ Sta-Lok Self Fit Terminal, the reusable alternative to swage
- ▶ Only basic hand tools required
- ▶ No pre-measurement needed
- ▶ Quick and easy to install
- ▶ Guaranteed stronger than wire rope
- ▶ For right hand and left hand lay wire rope
- ▶ Packed for 1x19 wire as standard
- ▶ Manufactured from high specification 316 stainless steel
- ▶ Different wedges are available to terminate 7 strand & compacted strand wire ropes

REFERENCE	WIRE SIZE		A		B		D		H		WEIGHT		PRICE	
	MM	INCH	MM	INCH	MM	INCH	MM	INCH	MM	INCH	KG	LB	\$	
033-03	3 MM & 1/8"		17.9	0.705	10.0	0.393	5.0	0.196	6.5	1/4	0.020	0.044	36.50	
033-04	4 MM & 5/32"		20.3	0.800	14.7	0.580	5.8	0.230	8.0	5/16	0.040	0.088	39.50	
033-05	-	5	-	24.4	0.960	18.0	0.710	7.5	0.295	10.0	3/8	0.080	0.176	47.00
-	133-05	-	3/16	24.4	0.960	18.0	0.710	7.5	0.295	10.0	3/8	0.080	0.176	47.00
-	133-55-3/8	-	7/32	32.4	1.276	23.7	0.933	9.5	0.375	10.0	3/8	0.140	0.309	60.50
-	133-55-7/16	-	7/32	31.7	1.248	23.0	0.904	9.5	0.375	11.5	7/16	0.140	0.309	60.50
033-06	-	6	-	31.0	1.219	22.2	0.875	9.5	0.375	13.0	1/2	0.140	0.309	60.50
-	133-06-3/8	-	1/4	32.4	1.276	23.7	0.933	9.5	0.375	10.0	3/8	0.140	0.309	60.50
-	133-06-7/16	-	1/4	31.7	1.248	23.0	0.904	9.5	0.375	11.5	7/16	0.140	0.309	60.50
-	133-06	-	1/4	31.0	1.219	22.2	0.875	9.5	0.375	13.0	1/2	0.140	0.309	60.50
033-07	7 MM & 9/32"		32.5	1.281	24.6	0.969	10.5	0.413	13.0	1/2	0.160	0.353	69.00	
033-08-1/2	8 MM & 5/16"		35.7	1.406	27.0	1.062	12.0	0.472	13.0	1/2	0.240	0.529	84.50	
033-08-5/8	8 MM & 5/16"		35.7	1.406	27.0	1.062	13.5	0.531	16.0	5/8	0.280	0.617	103.50	
033-10	-	10	-	41.1	1.619	29.2	1.150	13.5	0.531	16.0	5/8	0.340	0.750	127.50
033-10-3/4	-	10	-	41.1	1.619	29.2	1.150	13.5	0.531	19.5	3/4	0.400	0.882	127.50
-	133-10	-	3/8	41.1	1.619	29.2	1.150	13.5	0.531	16.0	5/8	0.340	0.750	127.50
-	133-10-3/4	-	3/8	41.1	1.619	29.2	1.150	13.5	0.531	19.5	3/4	0.400	0.882	127.50
-	133-11	-	7/16	42.8	1.687	33.3	1.312	19.0	0.748	19.5	3/4	0.680	1.499	190.50
033-12	-	12	-	42.8	1.687	33.3	1.312	19.0	0.748	19.5	3/4	0.680	1.499	239.00
-	133-12	-	1/2	42.8	1.687	33.3	1.312	19.0	0.748	19.5	3/4	0.680	1.499	239.00
-	133-12-7/8	-	1/2	42.8	1.687	33.3	1.312	19.0	0.748	22.5	7/8	0.700	1.543	343.50
033-14	14 MM & 9/16"		55.6	2.187	38.1	1.500	20.0	0.788	22.5	7/8	1.100	2.425	370.00	
033-14 -1	14 MM & 9/16"		55.6	2.187	38.1	1.500	20.0	0.788	25.4	1	1.220	2.690	400.00	
033-16	16 MM & 5/8"		59.0	2.326	40.0	1.576	20.0	0.788	22.5	7/8	1.420	3.131	430.50	
033-16-1	16 MM & 5/8"		60.0	2.364	40.0	1.576	20.0	0.788	25.4	1	1.700	3.748	443.00	
033-19	19 MM & 3/4"		68.3	2.687	49.2	1.937	27.0	1.062	28.6	1 1/8	2.820	6.217	909.00	
033-22	22 MM & 7/8"		82.6	3.250	60.3	2.375	33.3	1.312	35.0	1 3/8	3.960	8.730	1084.00	
033-26	26 MM & 1"		86.0	3.375	60.3	2.375	33.3	1.312	35.0	1 3/8	5.300	11.684	1426.00	

Metric Only

Inch Only

+1 910 297 2826 | usa@stalok.com